

Root Dental Implant System



b BIOMATE™
Digital Implant Line



Made In Egypt

DENTAL **HEX** |

The key features

Biomate Implant Internal HEX construction

Important to know

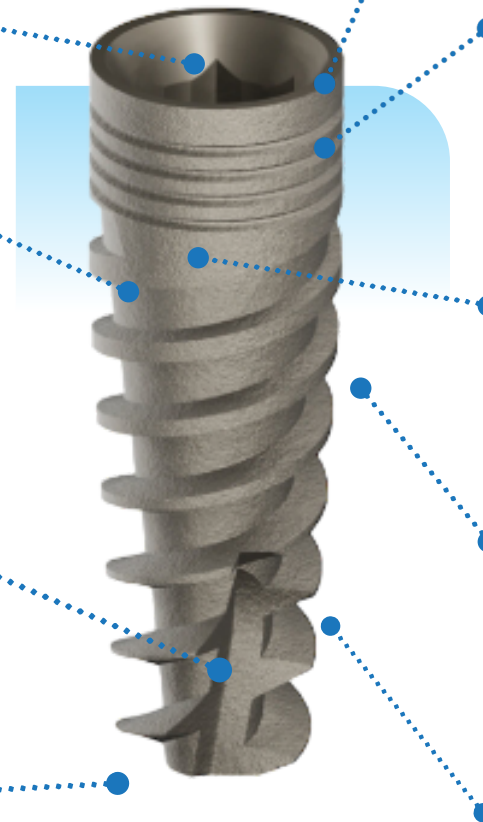
The internal hex connection (Platform) is the most widely used connection in the industry - the benefits are that compatible parts exist in every part of the world. **Over 50 % of all Implant production are made with Internal Hex.** This connection (or "platform connection") is used by Zimmer®, Bio Horizons®, MIS®, Implant Direct Legacy® and many more. The Internal Hex is also the easiest connection to restore against the 2nd most popular connection the **tapered Internal Hex.**

Connection Internal Hex
connection, without micro gaps

Unique Thread
Wider threads in the upper body that increase surface area and reduce bone stress, then transition to sharper threads for **self-tapping** function

Vertical Groov
For greater primary Stability

Apical blades
Allow implant to **self-drilling**
Specially in Complic



Platform switching
Standard abutments fit all regular diameters 3.2 , 3.7 , 4.2 , 4.7 m m

Slim Line Abutments fit all Slim implant diameters 2.8 mm

Micro Grooves
Add greater surface area and reduce stress on crestal bone, prevent loss of marginal bone and increase "bone-to-implant" contact.

SLA
Sandblasted with large particles, acid etched .

Tapered Body
Increases initial stability in immediate implant cases

BUTRESS Cutting Edge Enhances **self-tapping** for D4, D5 Cases Easy insertion and bone condensing High primary stability

Biomate Implant sizes and diameters

Universal Connection

SLA	3.2	3.7	4.2	4.9
6.0		●	●	●
8.0	●	●	●	●
10	●	●	●	●
11.5	●	●	●	●
13	●	●	●	●
15	●	●	●	●

PLATFORM SWITCHING

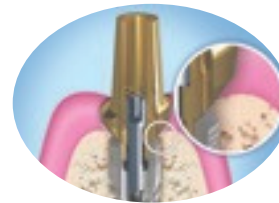
SINGLE STANDARD PLATFORM



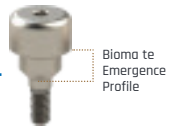
why you choose Biomate

Biomate Implants are made of the strongest **"Grade 5" Titanium** alloy which goes through a special **sandblasting and etching process.**

Hex Connection (Platform) is the most widely used connection in the industry.



Biomate Implants Abutments provide an **Emergence Profile** for perfect soft tissue management.



All Biomate Implants include a Cover Screw.



6 mm **short Implants** Start with 4.2 mm Implant Diameters.



All Biomate abutment screws are customized to accept **the same screw driver - no matter what platform** or type of abutment.



All Biomate Abutments are packaged including an **Abutment Fixation Screw** made of **Titanium Grade 5.**



Biomate Implants provides a **Narrow Line** with diameters of 2.8 mm
 \varnothing 2.8 mm



MUA Abutment is manufactured in **Straight and angled versions** With **17° and 30°.**

Biomate Multi Abutments are also made for its **3.2 Narrow line platform.**



Biomate SLA method

The Implant surface - Sand blasted with Large Grit, Acid Etched

Biomate Implants are made of a “Grade 5” Titanium alloy (Ti6AL4VELI: 90 % Titanium, 6 % Aluminum, 4 % Vana-dium), which goes through a special sandblasting and etching process.

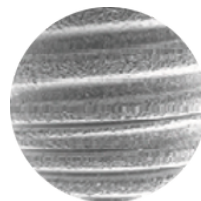
Benefits

- Bone strengthening due to early Implant contact
- Increased stability
- Shortened healing phase
- Higher predictability of the healing process

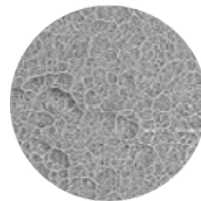


Corundum sandblasting and acid etching of the implant surface

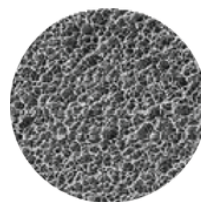
- Sandblasting creates a macro surface of 20-40 µm (microns)
- Double thermal acid etching process creates structures between 1-5 µm



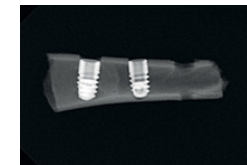
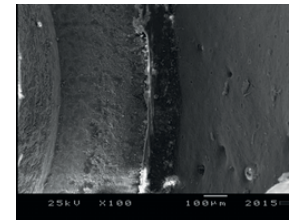
The surface benefit from a micro sandblasting.



Microscopic view of the implant surface after acid treatment.



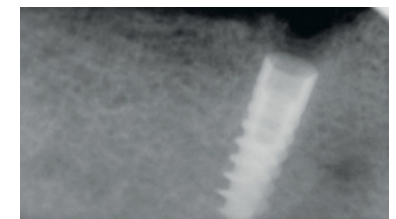
Confirmation of the efficiency of acid treatment by scanning electron microscopy.



Pioneer



Genius

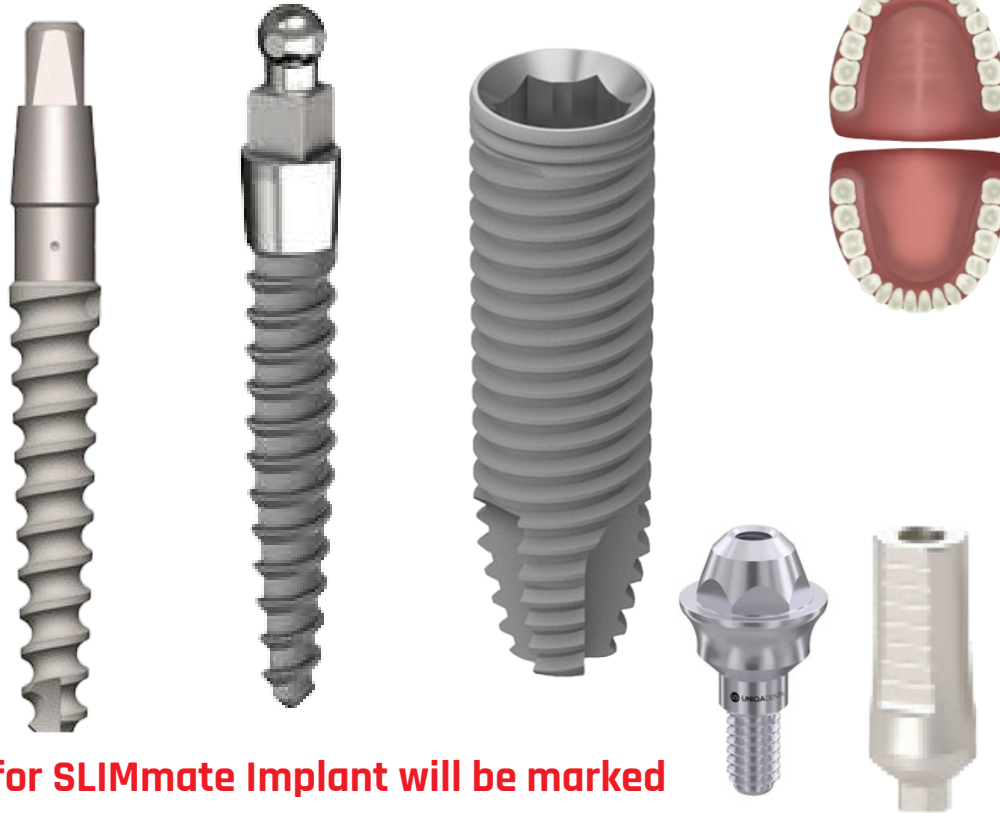


Biomate new implant line

SLIMmate implant

NEW!

2.78 D
10.0 mm L
11.5 mm L
13.0 mm L
15.0 mm L



Slimmate implant
with 2.87 mm
Diameter is perfect
choice

for narrow ridges purpose or
aesthetic zone for anterior area ,
obviously it cannot be on the same
diameter
platform as the Standard Line. Our
Platform have a
full line of Multi Unit , Overdenture
Abutments ,transfer and analog
you can restore all options
with this SLIMmate Implant you can
overcome the worst cases at
anterior aesthetic zone



*Available Accessories for SLIMmate Implant will be marked

MUA STRAIGHT / CEMENTED STRAIGHT / Healing Abutment / ball abutment was

CEMENTED RETAINED OPTIONS

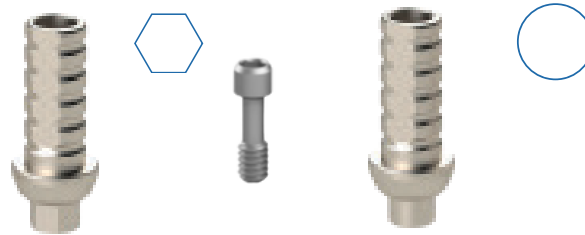
available for 3.2, 3.7 ,4.2, 4.9 D

CEMENTED ABUTMENT



GH 1.5 - 3.0 mm / 7 - 9 mm H
15 - 25 angulation

TEMPORARY ABUTMENT



Anti-Rotational

Rotational

exocad



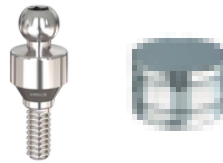
1.25 D

HEALING ABUTMENT



1-6 mm H / 4-6 mm D

OVER DENTURE ABUTMENT



1.5-3 mm GH / metal housing & plastic cap included



available for 3.2, 3.7 ,4.2, 4.9 D

Screwing Torque 20 N

available for 3.2, 3.7, 4.2, 4.9 D

SCREW RETAINED OPTIONS

CASTABLE ABUTMENT



GH 1.5 - 3.0 mm

Ti- base ABUTMENT



GH 1.5 - 3.0 mm

MULTI UNIT ABUTMENT / CYLINDER



GH 1.0-3.0 mm / 1.5-3 H



GH 1.0-3.0 mm / 1.5 -3.0 H



Ti- temporary/ ti- base / Mua Healing

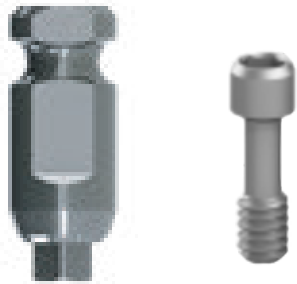


Screwing Torque 20 N

ANALOG RESTORATION OPTIONS

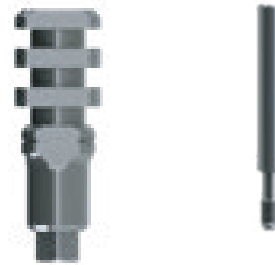
available for 3.2, 3.7, 4.2, 4.9 D

CLOSE TRAY TRANSFER



9.0 mm H

OPEN TRAY TRANSFER



9.0 mm H

ANALOG



OPEN TRAY TRANSFER FOR MUA



ANALOG FOR MUA



Screwing Torque 20 N

available for 3.2, 3.7, 4.2, 4.9 D

Endless Solutions Of Prosthetic Parts

Digital RESTORATION OPTIONS

exocad

SCAN BODY



DIGITAL ANALOG



SCAN BODY FOR MUA



DIGITAL ANALOG FOR MUA



exocad

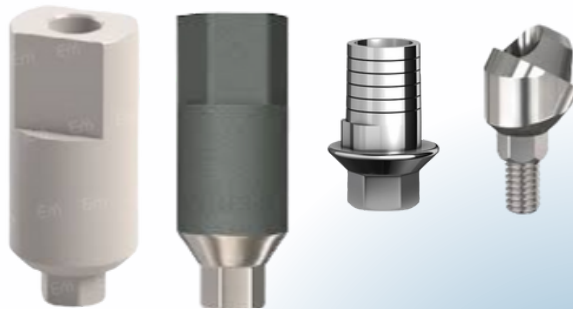




exocad



DIGITAL LIBRARY

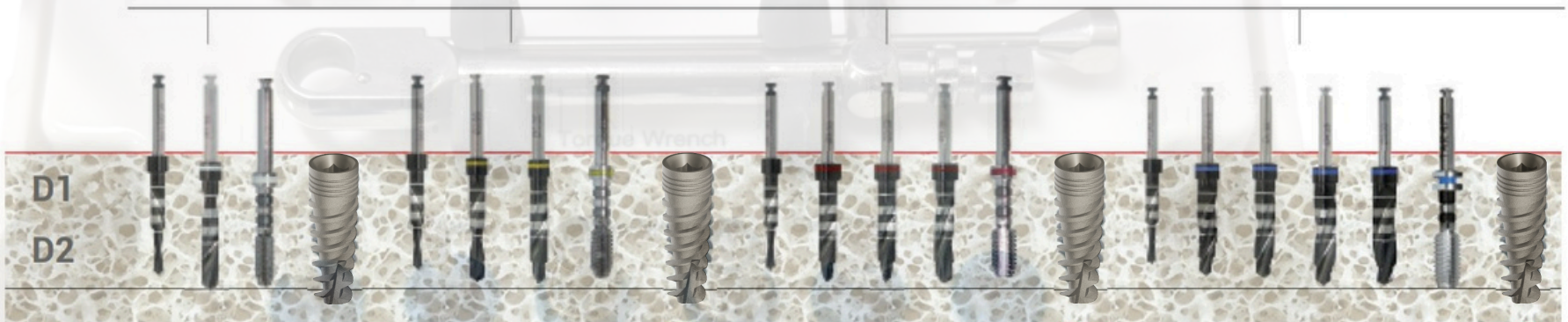


DENTAL **H**  **X** | 

Surgical PROTOCOL

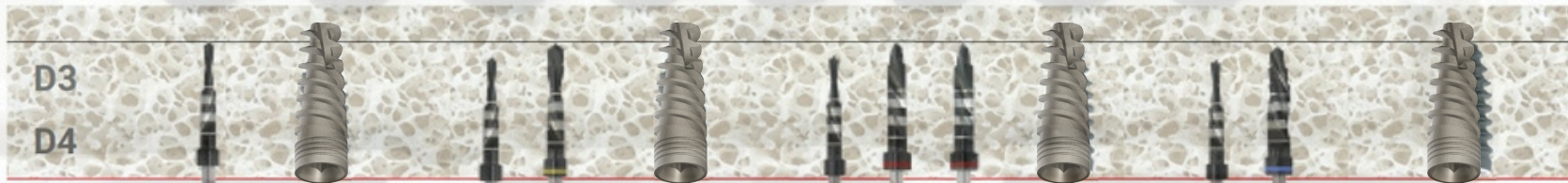


Drill diameter,mm	2.00/2.70	3.85	3.25	2.00/2.70	3.00	3.25	3.75	2.00/2.70	3.35	3.50	3.70	4.25	2.00/2.70	2.70/4.00	4.00	4.25	4.50	4.85
Drilling rate, RPM	1200	600	400	1200	600	600	400	1200	600	600	600	400	1200	600	600	600	600	400
D1 D2	TO	TO	TO	TO	TO	TO	TO	TO	TO	TO	TO	TO	TO	TO	TO	TO	TO	TO
	1500	800	600	1500	800	800	600	1500	800	800	800	600	1500	800	800	800	800	600



Ø Implant	3.20 D				3.75 D				4.20 D				4.90 D			
Ø Drill	2.0 - 2.5-2.8				2.0 - 2.5-2.8-3.2				2.0 - 2.5-2.8-3.2-3.7				2.0 - 2.5-2.8-3.2-3.7-4.2-4.5			

Drilling rate, RPM	1200	1200	600	1200	600	600	1200	600	600	1200	600
D3 D4	TO	TO	TO	TO	TO	TO	TO	TO	TO	TO	TO
	1500	1500	800	1500	800	800	1500	800	800	1500	800



Ø Implant	3.20 D		3.75 D			4.20 D			4.90 D		
Ø Drill	2.0 - 2.5		2.0 - 2.5-2.8			2.0 - 2.5-2.8-3.2			2.0 - 2.5-2.8-3.2-3.7-4.2		

DENTAL

NON

HEX



SOLUTIONS!



**Solid
abutment**



MUA



Healing cap



**Ball and
socket**

BIOMATE IMPLANT PROVIDE
CUSTOMIZED DIFFRENT
RESTORATION FOR ANY IMPLANT
SYSTEM

THIS SERVICE IS offered to
dentists

1/ UNKNOWN IMPLANT BRAND

2/ For IMPLANT with No AGENT IN
SAME MARKET

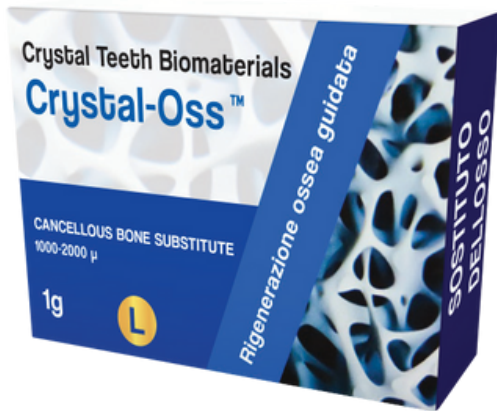
3/ unavailable specific
accessories for implant system

FOR ANY IMPLANT SYSTEM !

Socket Preservation
Ridge Augmentation
Implantology Sinus
Lifting



Cardioplant



Available Particular
Size Formation

0.25-1.0 mm
1.0-2.0 mm

Weight

1.0gm - 2.0gm





DENTAL **HEX** | 



MANUFACTURE ED BY



DENTALHEX | 

Official Marketing Partner

Contact Us

☎ 010-666-953-66 | 0109-744-88-64

📍 5 El Gabarty St., Masr El Gedida

🌐 www.dental-hex.com ✉ sales@dentalhex.org   Dentahex2

